

INTERNATIONAL INSTITUTE
of Minnesota



INTERNATIONAL INSTITUTE
of Minnesota

DRIVER'S EDUCATION
INTERNATIONAL INSTITUTE OF MN
CHAPTER 2

VEHICLE REQUIREMENTS



MUST HAVE TWO BRAKE SYSTEMS

All vehicles **MUST** be equipped with at least **TWO** separate braking systems

Foot Brake



Parking Brake



VEHICLE MUST HAVE BUMPERS

- “ **ALL private passenger cars MUST have BOTH front and rear bumpers**
- “ **Pickup trucks and vans must have front bumpers and either rear bumpers or reflectors**



MUST HAVE A HORN

Your vehicle must have a working horn

- “ Bells, sirens, and whistles are NOT horns and can only be used on emergency vehicles
- “ Use your horn when necessary to avoid a crash NOT to announce your arrival or honk unnecessarily



HEADLIGHTS AND TAILLIGHTS

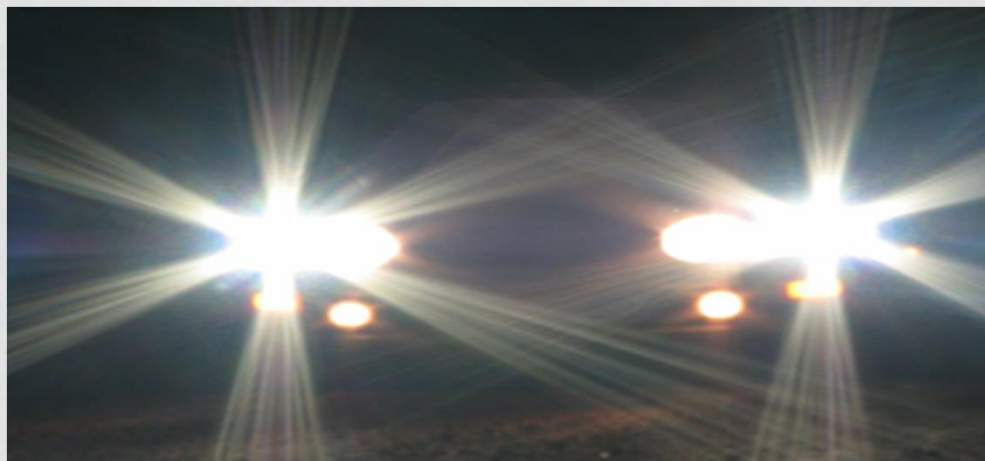
- “ ALL motor vehicles, **MUST** have two white head lights that work on **HIGH** and **LOW** beam
- “ Must have **red tail lights**
- “ Must have **red brake lights** that come on when the brake pedal is pressed



HEADLIGHTS AND TAILLIGHTS

Head light/Tail light maintenance:

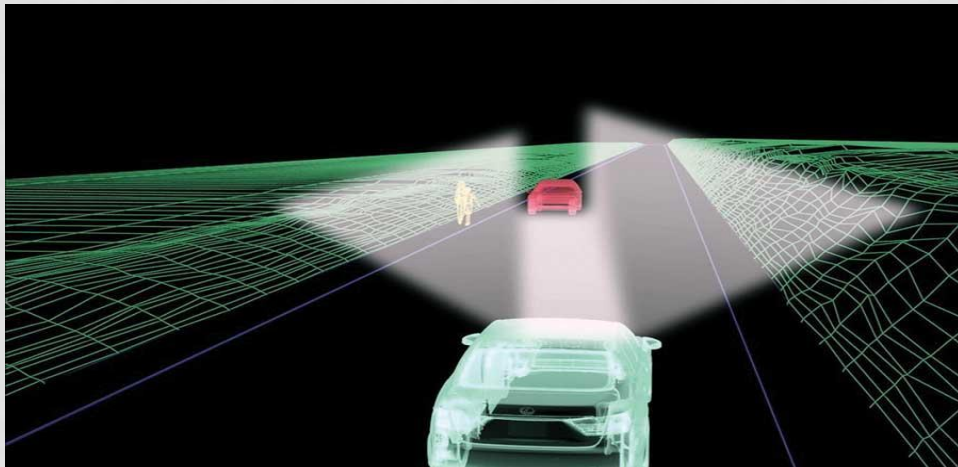
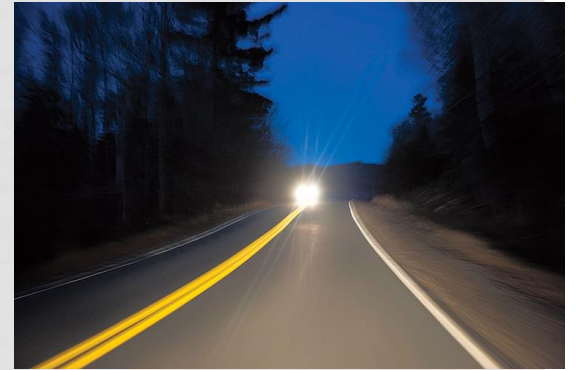
- “ **Replace broken/cracked lenses**
- “ **Clean head lights as often as you clean your windshield**
- “ **Have your head lights inspected & adjusted yearly**



HEAD LIGHTS

Bright (high beam) head lights must illuminate objects from at least 350 feet away

Dim bright lights for oncoming cars



HEADLIGHTS

Your headlights **MUST** be on:

- “ From sunset until sunrise
- “ During inclement weather – rain, snow, sleet, hail, fog, etc.
- “ If you can't see the road for a distance of 500 feet
- “ If your windshield wipers are **on**, your lights must be **on**



LICENSE PLATE LIGHT AND TURN SIGNALS

“ A white light must illuminate the rear license to make it visible at night

“ All turn signals must be in working order

“ You **MUST** use your turn signals if your you are carrying or towing wide loads.



PROHIBITED LIGHTS

These lights are allowed
ONLY ON AUTHORIZED VEHICLES:

“ **Blue lights**

“ **Flashing lights**

“ **Strobe lights**

Authorized Vehicles are:

“ **Snowplows**

“ **Emergency vehicles**

“ **School buses**

“ **Road maintenance vehicles**

“ **Farm equipment**



MUFFLERS

- “ ALL motor vehicles must be equipped with mufflers that keep the vehicle from making sudden and prolonged loud noises.
- “ Check mufflers and exhaust system for leaks! (carbon monoxide)



REARVIEW MIRRORS

- “ All passenger vehicles must be equipped with rearview mirrors
- “ Vehicles **MUST** be have an additional outside mirror, when there isn't a clear view through the rear window (trucks, vans, and pickups used for hauling)
- “ You always need to check blind spots
- “ **Move your head**



SEATBELTS

Seatbelts in motor vehicles must be clean and in good working order and available to all occupants

**In Minnesota, seatbelt use is MANDATORY
Nonuse is a primary offense and you can be ticketed just for that**



AIRBAGS

Airbags are designed to **WORK WITH** the seatbelts and are just **SECONDARY** restraint systems

They are **NOT** designed to keep occupants from being ejected from the vehicle



TIRES

- “ Tires must be able to carry your vehicle’s weight and grip the road
- “ A tire is illegal if the tread depth is less than 1/16th of an inch
- “ **Check tires regularly for:**
 - Cracks, cuts, uneven wear, bulges, punctures**
 - Make sure your tires are the correct size for your vehicle and all 4 match brand, model, and size**



WINDSHIELD

Your view through the windshield and windows must be clear and unobstructed.



- “ No cracks, discoloration, steam, frost, ice, snow
- “ GPS / navigating systems may be mounted/located near the bottom most portion of the windshield
- “ Stickers and labels may be attached to the windshield if permitted by state law



WINDSHIELDS

Windshields **MAY NOT** be covered by or treated with any material that makes the glass more reflective or reduces incoming light.

No objects may be suspended between the driver and the windshield



WINDOWS

Window tint cannot reduce the light transmittance of light to less than 50% or reflection to more than 20%

Window tint can be used only on:

- “ the rear window of a pickup**
- “ the rear and side windows of a van (behind the driver’ s seat)**
- “ in limousines**
- “ In vehicles used by a funeral home**



WINDSHIELD WIPERS & WINDOW DEFROSTERS

- “ Any vehicle equipped with a glass windshield **MUST** be equipped with wipers in good working order
- “ Defrosters are necessary to keep the windshield and windows clear of frost and steam



WHEEL GUARDS AND FENDERS

Passenger vehicles **MUST** be equipped with fenders or other wheel guards that prevent **WATER, DIRT,** and other **MATERIAL** from being picked up and thrown into the air by the tires



FUEL EFFICIENT TECHNIQUES

- “ Keep your engine running properly
- “ Keep your tires properly inflated
- “ Use the recommended motor oil for your vehicle
- “ Combine errands into one trip
- “ Avoid aggressive driving like speeding and rapid acceleration
- “ Observe the speed limit

