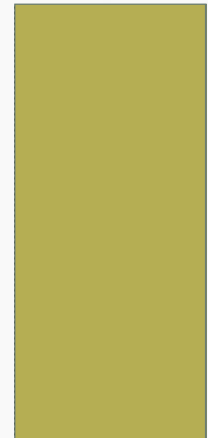




INTERNATIONAL INSTITUTE  
*of Minnesota*

**DRIVER'S EDUCATION**  
INTERNATIONAL INSTITUTE OF MN  
CHAPTER 4

**SHARING THE ROAD**

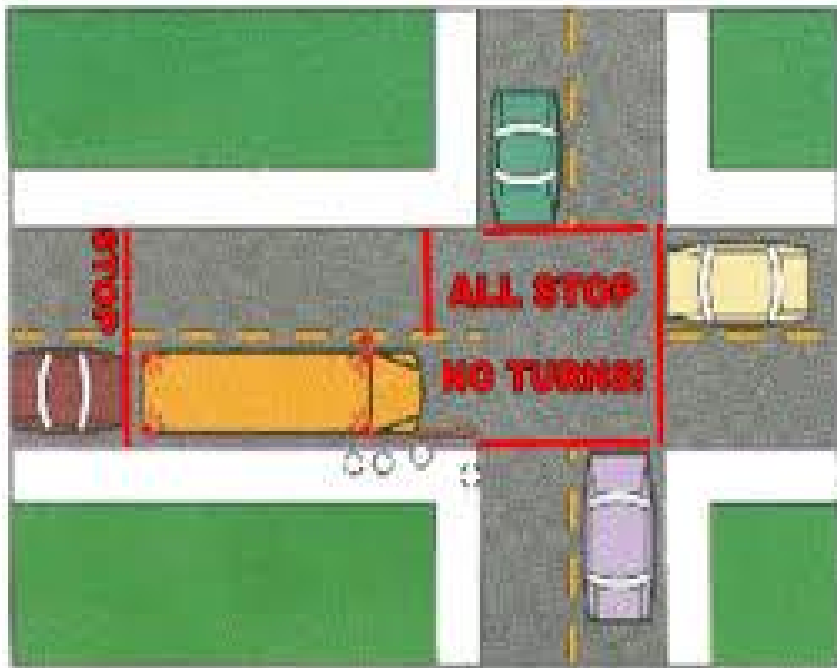


# SCHOOL BUSES – CAUTION !!!

Always stop for school buses, flashing lights and stop signs – stop and wait

No passing when lights are flashing

Fines up to \$3,000 and/or one year in jail



# SCHOOL BUSES – CAUTION !!!

School buses have the right of way over cars

All traffic must stop and yield to buses



## KNOW AND OBEY SCHOOL BUS LAWS

If you fail to stop for a school bus with RED LIGHTS FLASHING & STOP ARMS EXTENDED it is considered as a gross misdemeanor, punishable by a \$3000.00 fine and/or one year in jail.



**CAUTION:** The majority of children injured or killed in gross transportation accidents occurred on the road. DON'T DRINK AND DRIVE. When you drink, you're more likely to fall asleep at the wheel and ignore your responsibility to stay alert. The state of Ohio has a zero-tolerance law for drivers under 21 for .02% BAC.

### RED LIGHTS FLASHING



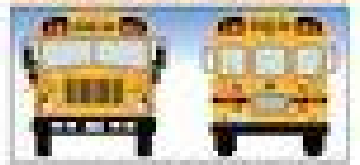
A school bus must activate the red flashing lights when it stops to load or unload children. When the driver's right hand is on the wheel, the driver must stop. All school buses must stop for the red lights.

### RED LIGHTS & STOP ARMS



The driver must stop for a school bus with red flashing lights and stop arms extended. The driver must stop for a school bus with red flashing lights and stop arms extended. The driver must stop for a school bus with red flashing lights and stop arms extended.

### RED LIGHTS FLASHING & STOP ARMS



When a school bus is stopped with flashing red lights and stop arms extended, all traffic must stop. When the driver's right hand is on the wheel, the driver must stop. All school buses must stop for the red lights.

# RIGHT OF WAY - YIELDING

- “ For School Safety Patrols
- “ For pedestrians in crosswalks
- “ For pedestrians at intersections
- “ For Emergency Vehicles and Police
- “ Merging cars must yield

At 4-WAY STOP signs:  
First car goes first, others must yield. Cars arriving at the same time: Left vehicles must yield



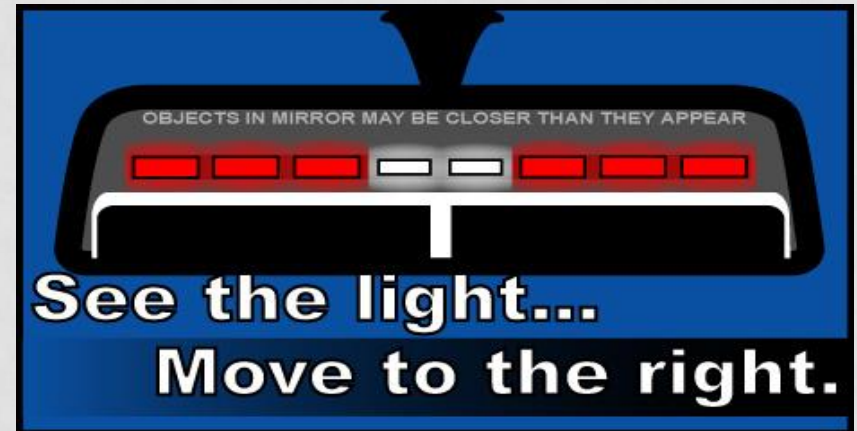
# EMERGENCY VEHICLES

## MOVE OVER !!!

Move over a lane when passing by Emergency Vehicles on roadside



Move over to right and stop for Emergency Vehicles



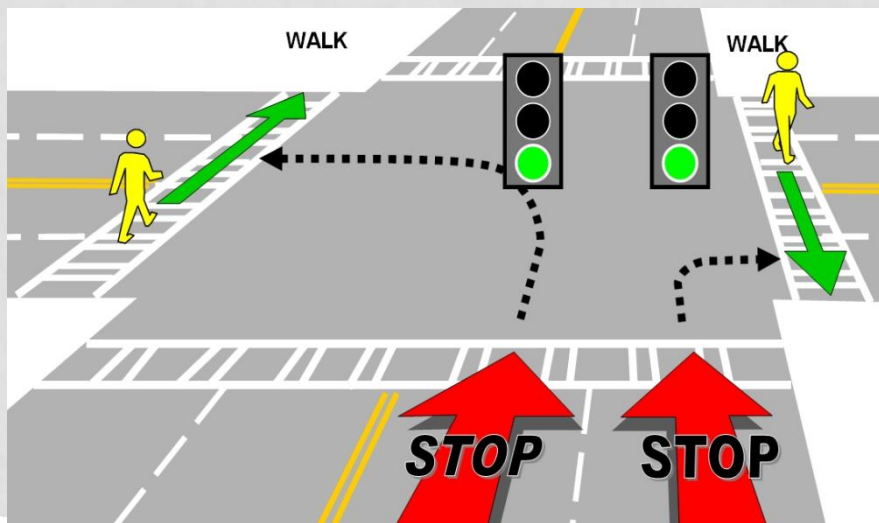
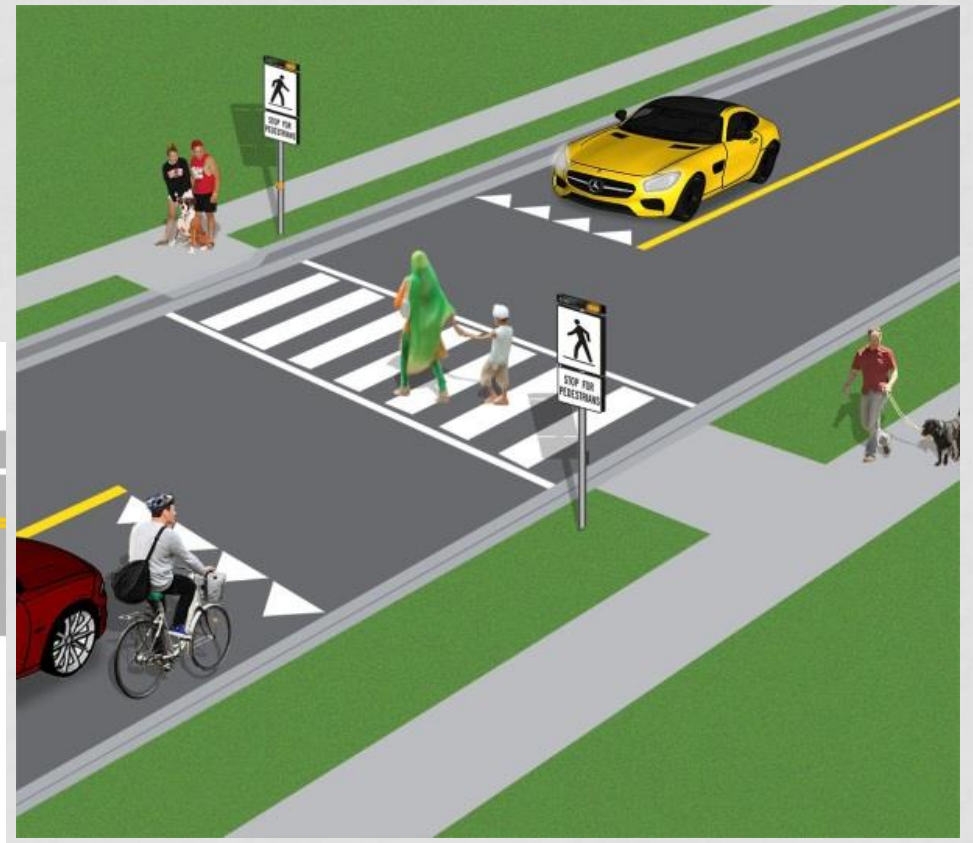
# PEDESTRIANS

## WATCH AND STOP

Stop for pedestrians when turning at intersections



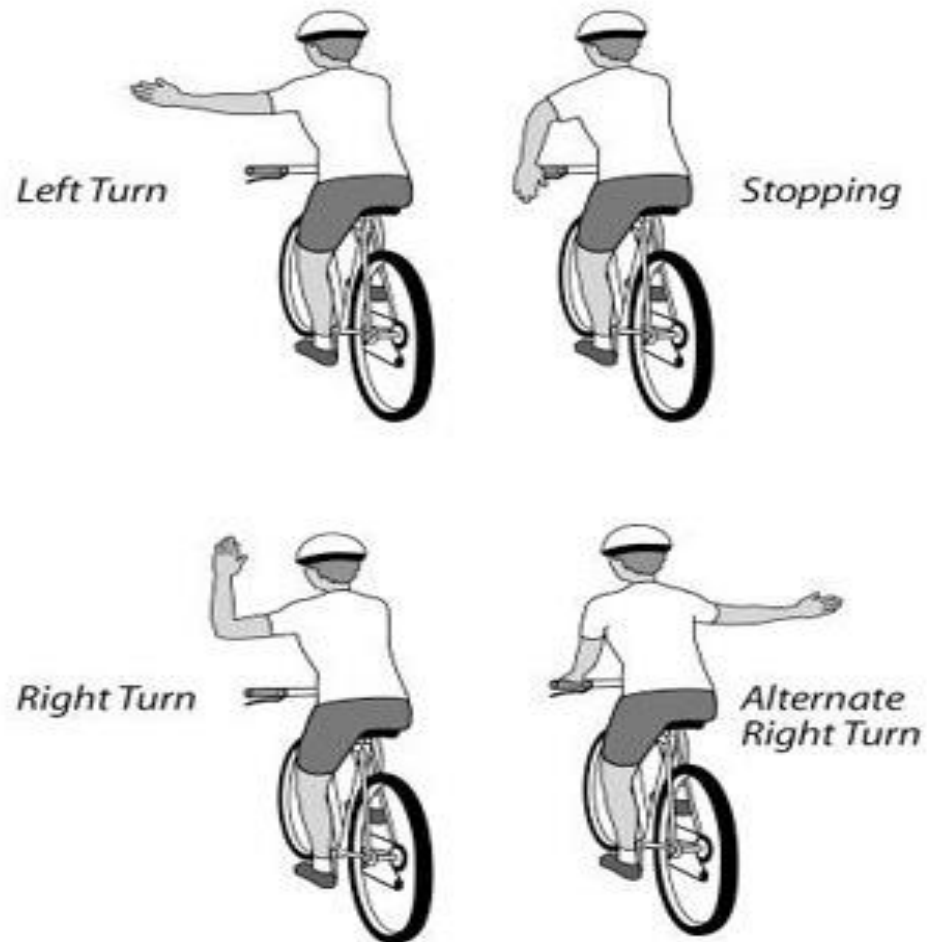
Stop and yield at crosswalks for pedestrians



# BICYCLES: SHARE THE ROAD

Keep out of bike lanes

Watch for bike signals



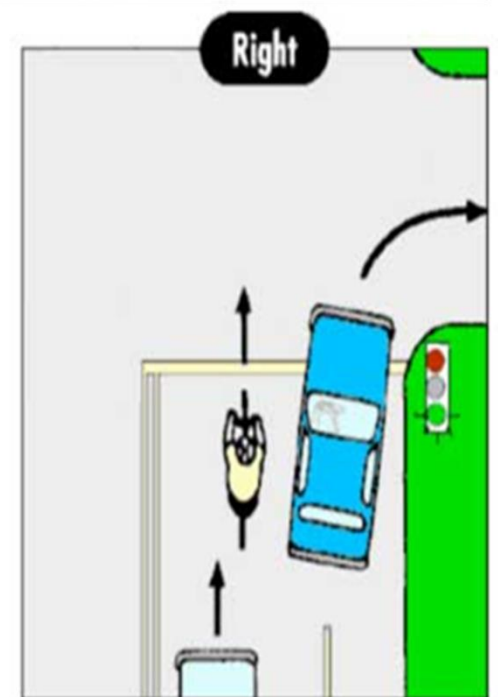
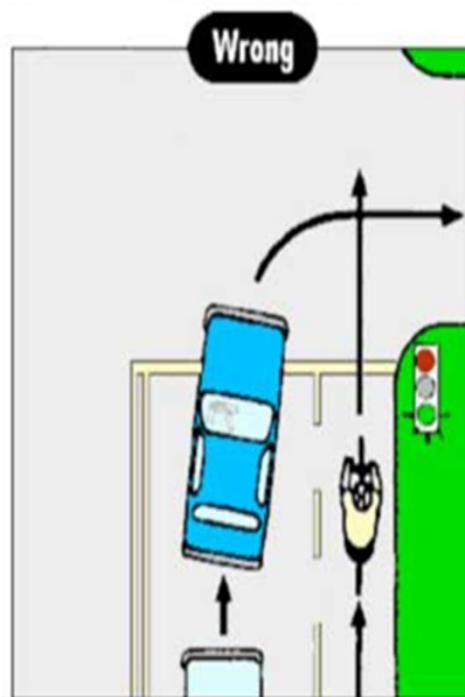


# BICYCLES: SHARE THE ROAD

Pass bikes with  
3 feet minimum!



Don't turn across the bike lane, move over before turning



# MOTORCYCLES: **SHARE THE ROAD**

“ Give motorcycles the room you give a car

“ Watch and see them when turning

“ Don't turn in front of them

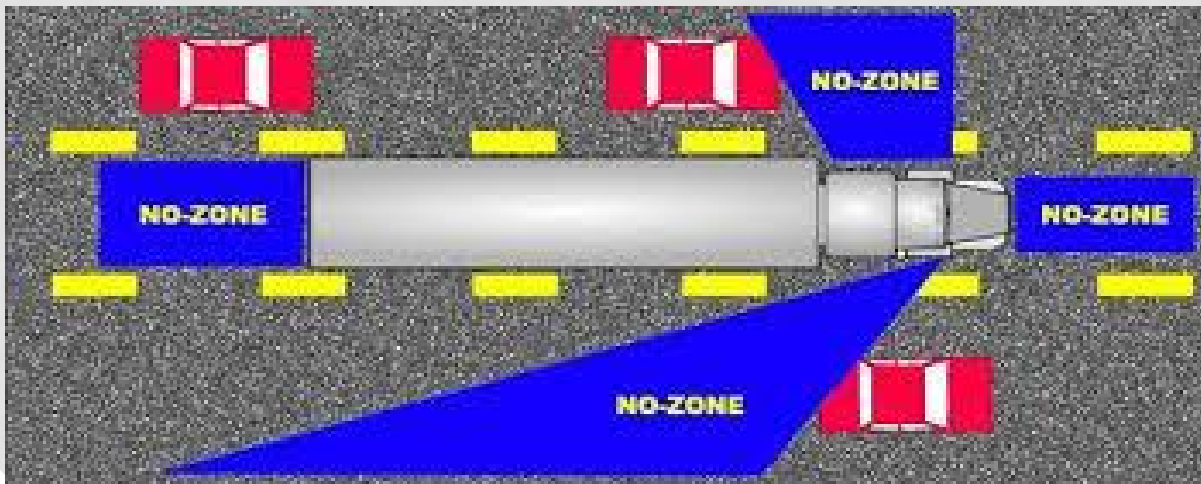
Look at your blind spots – keep them in sight



# SEMI TRUCKS – COMMERCIAL VEHICLES

Semi Trucks need room and respect !!!  
Semis have **blind spots** – they only see you if you see the driver or side mirrors

Semis need wide turn area – watch out !!!





# RAILROAD CROSSINGS

Stop for trains – they can't !!!

Stop and check for trains





# WORK ZONES – ROAD CONSTRUCTION

**Traffic fines double in work zones**

**Slow down – Prepare to stop !!!**

**Reduced speeds in construction zones**

**Watch for signal workers  
Road Safety !!!**





# ROAD CONSTRUCTION

Watch for lane changes  
Pay attention to detours





# ROAD CONSTRUCTION – SIGNS



# ROAD SIGNS – DRIVER'S RULES

Marking highways and streets



Regulating drivers





# WARNING SIGNS - CAUTION

Be alert !!!

## Hazards and signals Road conditions



### Warning Signs

