

INTERNATIONAL INSTITUTE
of Minnesota



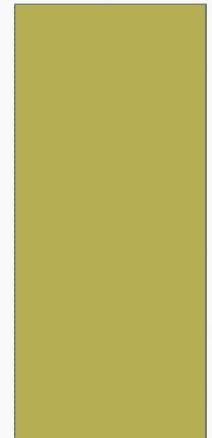
INTERNATIONAL INSTITUTE
of Minnesota

DRIVER'S EDUCATION

INTERNATIONAL INSTITUTE OF MN

CHAPTER 6

DRIVING CONDITIONS



STAY ALERT – S I P D E

- “ S – Scan – Search ahead to anticipate
- “ I – Identity – Locate hazards, erratic drivers
- “ P – Predict – Look at what is in your path.
- “ D – Decide – Constantly make safe, evasive moves
- “ E – Execute – Communicate, drive slow and act safe



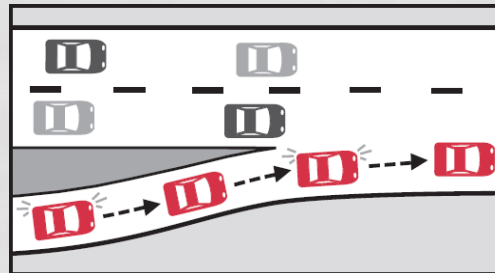
SAFETY – STOPPING DISTANCE

- “ Three second rule – safe following distance
3 seconds behind car
- “ Stopping distance – adjust to conditions and speed
- “ Night driving – don't drive faster than your headlight range
- “ Headlights – dim your bright beams 1000 feet for
oncoming and 300 feet for following car



FREEWAY DRIVING – SPEED/SAFETY

“ Entering a freeway:



“ Ramp meters

“ Yield and match the speed of other cars

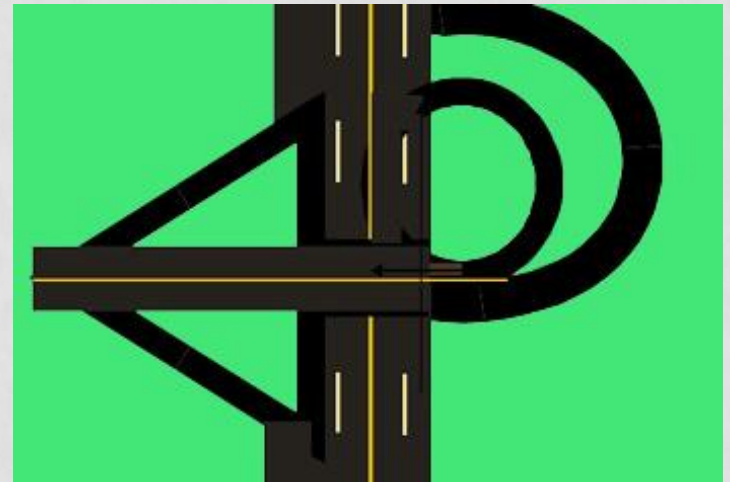
“ HOV Lanes (HOV = High Occupancy Vehicles)

“ Message boards and signs



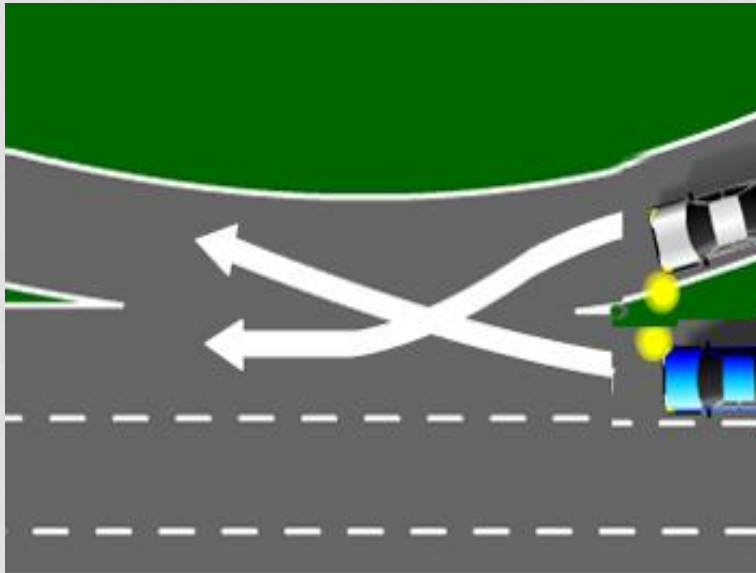
FREEWAY INTERCHANGES – ON / OFF

- “ Cloverleaf
- “ Folded diamond
- “ Diamond



FREEWAY DRIVING - CAUTION

- “ No stopping, parking or backing !!!**
- “ Yield to emergency vehicles**
- “ Safely exit freeways**

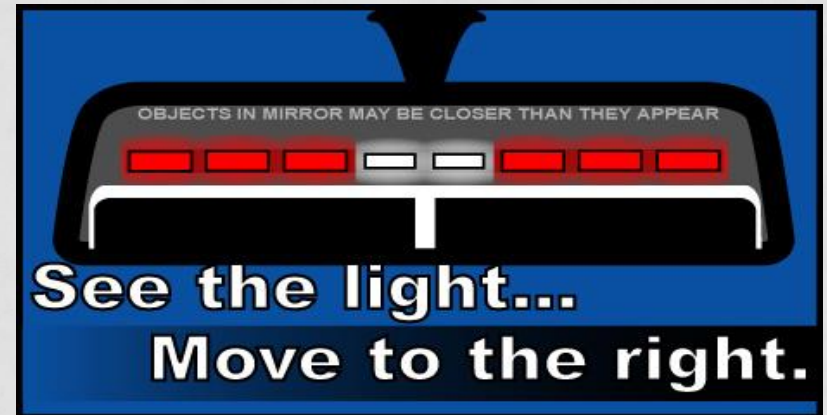


EMERGENCY VEHICLES

MOVE OVER !!!

“ Move over a lane
when passing by Emergency
Vehicles on roadside

- Move over to right and stop
for Emergency Vehicles



CRASHES AND BAD DRIVING

- “ Accidents – Get off roadway if there are no injuries
- “ Exchange driver info at a safe location
- “ Watch for distracted driving
- “ Avoid aggressive driving



TRAILERS AND HAULING

- “ Keep 500 feet from Campers/RVs
- “ Pass carefully
- “ You must be 18 to drive RVs
- “ Allow plenty of space for turns
- “ You can be ticketed for unsafe loads



WINTER DRIVING / SURVIVAL

- ” Clear snow/ice off car
- ” Check wipers/washer fluid
- ” Increase following distances
- ” Share the road with snow plows
- ” SLOW DOWN.....



WINTER DRIVING / SURVIVAL

- “ Carry emergency supplies
- “ Prepare to stay alert, concentrate
- “ Skidding – stay calm and take foot off accelerator and steer into skid



RAIN, FOG AND HYDROPLANING

- ” Stay safe distance behind cars
- ” **Pull off road if visibility worsens**
- ” Use fog lamps, slow down
- ” **Don't drive over 35 MPH**
- ” Slow to prevent hydroplaning
- ” **Check wipers**



ROAD CALAMITIES

- “ **Hold tight to steering wheel with a blown tire**
- “ **Use emergency brakes if brake fails and try to coast to stop**
- “ **Slow down if being passed**



HAZARDS

- “ Narrow roads and hills - **slow down**
- “ **Hold tight and steer straight** if car runs off pavement
- “ **Move over for vehicles merging into your lane**



EMERGENCY DRIVING SITUATIONS

- “ If your car plunges into water, open windows slowly and escape quickly
- “ If car is on fire – pull over, turn off car and get out
- “ Overheated car – turn off accessories (radio, heat, air conditioning) and pull over to a safe place



MORE EMERGENCIES

- “ **Stalled on RR tracks:
get out of your car**
- “ **Watch out for deer**



EMERGENCY DRIVING SITUATIONS

- “ Wiper failure, slow down and pull over
- “ Open hood, slowly pull over
- “ Stuck gas pedal – brake, pull off and turn off car
- “ Carbon monoxide, CO poisoning – exhaust leaking into car – open windows and don't leave car running in closed space

